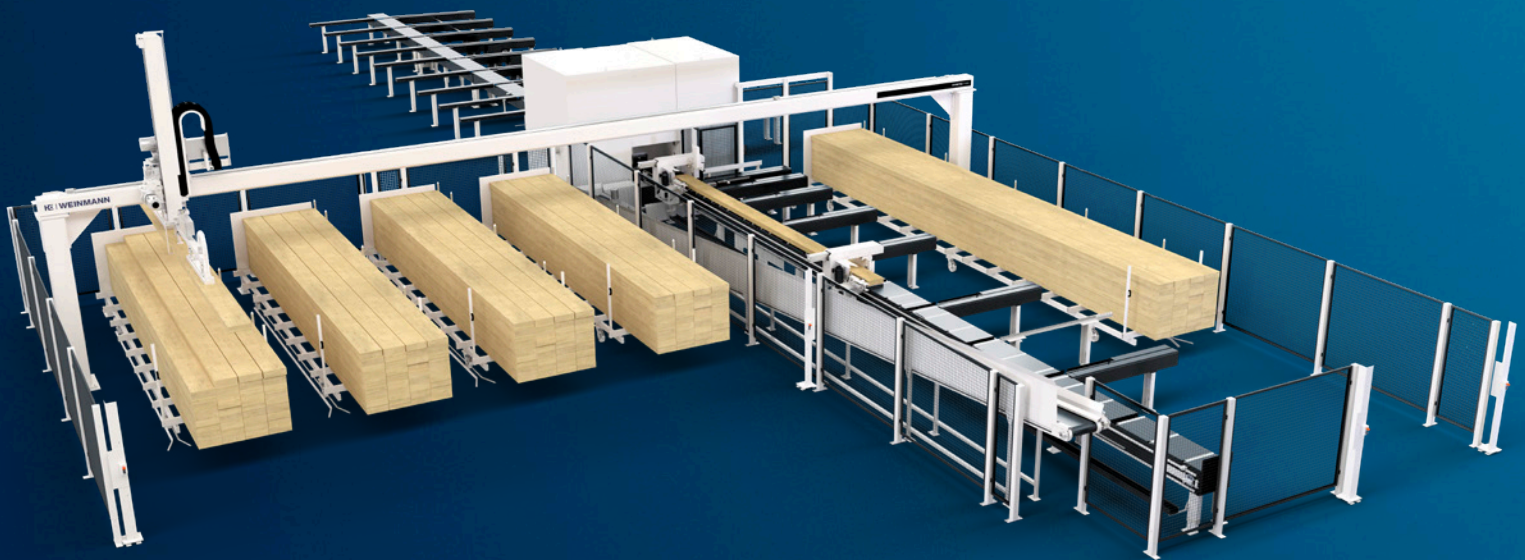


Feeding. Transporting. Storing.

Our handling and storage systems

FEEDTEQ | STORETEQ | STOCKTEQ







Optimized and simplified logistics

Smooth-running processes in the machine and system environment are just as important for continuous production as fast and efficient machines.

Our handling and storage systems optimize warehouse logistics, reduce waiting times and improve work ergonomics at the same time. Different variants are available to meet your requirements — both for individual work steps and for the entire process.

YOUR SOLUTION

MORE INFORMATION AVAILABLE AT [HOMAG.COM/WEINMANN](https://www.homag.com/weinmann)



CONTENTS

- 06 FEEDTEQ | STORETEQ handling systems
- 07 FEEDTEQ H-300 swing jib crane
- 08 FEEDTEQ H-500 surface gantry
- 10 STORETEQ H-100|300|700 feeding gantries
- 14 STOCKTEQ storage systems
- 20 Operation of the setup trolley,
distribution trolley and loading carriage
- 21 Options for STOCKTEQ storage systems
- 22 Practical applications
- 26 Technical data and layout for handling systems
- 28 Technical data and layout for storage systems
- 30 Life Cycle Services

Efficient from the start.

Production of individual components on time, optimal use of the available space and a high degree of work ergonomics are just some of the advantages that our handling and storage systems offer. Reduced waiting times and an optimized material flow ensure maximum productivity in your production.



End-to-end process

- Optimized space and improved logistics
- Short throughput times
- High machine availability thanks to fast material provision

High degree of work ergonomics

- Lightens the workload of employees by making it easier to handle heavy loads
- Simple operation and clear display
- Ergonomic working height

Versatile application options

- Automated material feeding of various raw materials such as beams and panels
- Systems for picking, transporting and loading
- Fitting windows and doors as well as finishing elements

FEEDTEQ/STORETEQ handling systems

From manually operated lifting systems to fully automated gantries, the FEEDTEQ and STORETEQ machines offer a broad range of options for optimized material manipulation. You will find the ideal solution for all process steps ranging from the storage of raw material to the feeding of the machine.



STOCKTEQ storage technology

The STOCKTEQ series offers a wide range of options for transporting and storing components. The setup and distribution trolleys are provided for transport between the individual workstations. The loading carriage is used for picking and loading elements before the final finishing work is carried out in the wall magazine.



FEEDTEQ handling systems

Ergonomic and simple.

The handling systems ensure significantly improved material manipulation. With different lifting systems, the required materials can be transported from the storage location to the respective machine. Different technologies are available depending on the material required.



Optimized material flows

- Structured production processes and short throughfeed times
- Rapid material provision
- Intelligent control system

Simplified material handling

- Beam and panel weight up to 1000 kg
- Axis speeds up to 90 m/min
- Automatic rotating and turning station (FEEDTEQ H-500)

Ergonomic working environment

- Improved working conditions due to fast and easy handling of heavy loads
- Easy-to-use manual systems

FEEDTEQ H-300

Swing jib crane

Using the integrated vacuum panel lifter, the operator can pick up the required material from the storage location and place it on the machine. This allows panels and other materials to be transported quickly and easily by just one employee. To optimize the material paths, the swing jib crane is positioned alongside the production plant.

Two variants are available:



Vacuum panel lifter

- Gentle panel handling using vacuum suction units
- Adjustable to different panel sizes via four suction cups
- Panel weights up to 85 kg (optionally more)

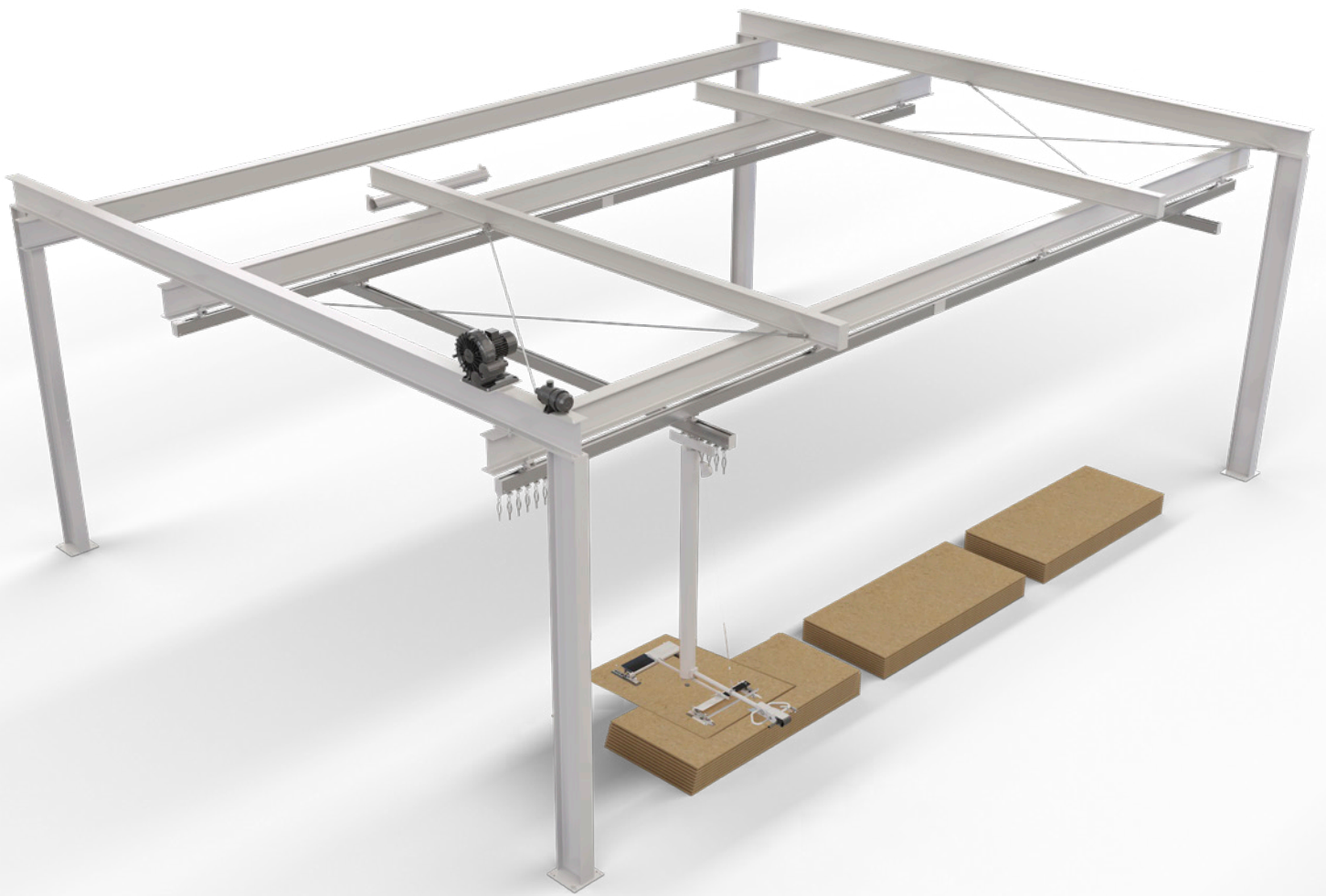


Mobile base plate

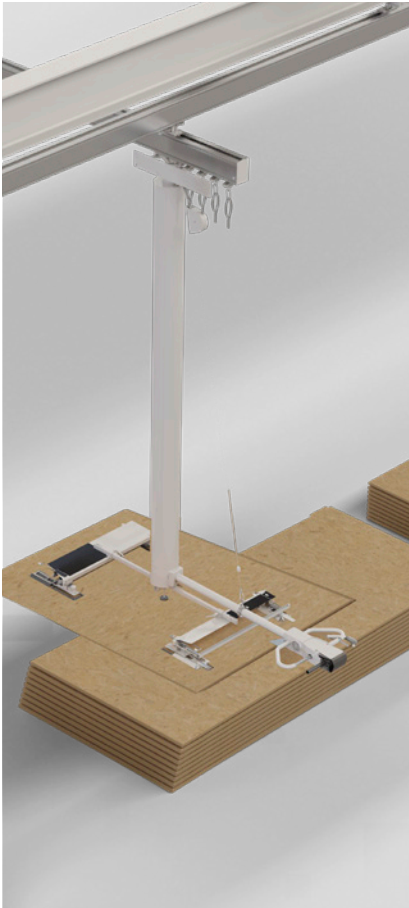
- Optionally available: mounting on a mobile base plate, which can be variably adjusted via a pallet truck
- Flexible design and adaptation of the material flow

FEEDTEQ H-500 surface gantry

The FEEDTEQ H-500 is used in production lines. Mounted on a surface gantry, the operator moves the respective integrated lifting unit freely in the X and Y directions. The areas to be traversed are freely selectable, thereby providing a larger working area.



The suitable lifting unit is available for windows as well as panel materials and beams:



Vacuum panel lifter

Using the vacuum grippers, the panel materials are picked up from the collection point and transported to the element.

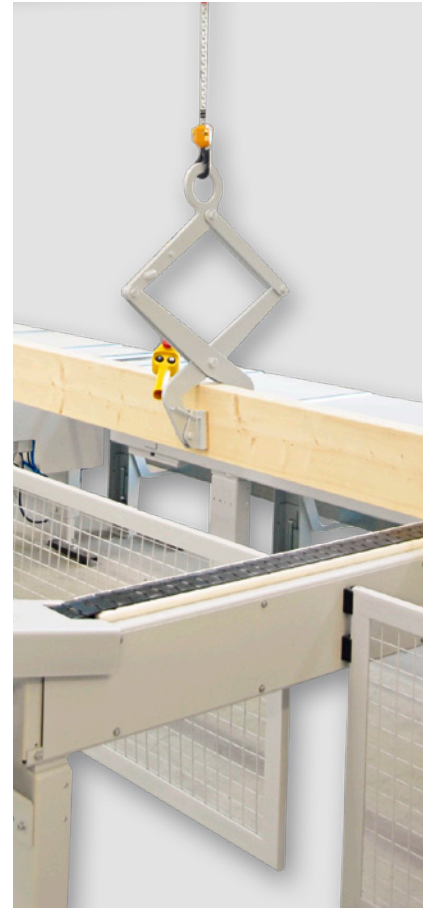
- Transport of different panel sizes via four suction cups
- Handling of panels weighing up to 85 kg
- The panels can be moved easily via ergonomically mounted handles



Vacuum window lifter

The vacuum window lifter makes it easier to install windows

- Handling via electric chain hoist with integrated vacuum gripper
- Windows with sash and horizontal crosspieces can also be transported
- 90° rotating function
- Window weights up to 300 kg (optionally more)



Beam lifters

With just one operator, beams can be easily transported from the warehouse to the machine.

- Transport via easy-glide rails
- Ergonomic operation via electric chain hoist with self-locking beam gripper
- Flexible use: transport of different beam dimensions both horizontally and vertically

STORETEQ feeding gantries

The right material at the right time and in the right place.

With the CNC-controlled feeding gantries in the STORETEQ series, you can optimize your material flow from the very beginning. The required raw material (studs, beams, panels) is fed to the machine for further processing fully automatically.



Flowing production processes

- High availability thanks to a fast material supply to the respective workstations
- High-speed servo drives with up to 90 m/min
- Greater performance across the entire system
- Simplified logistics using the kanban system
- Batch size 1 production by providing all the necessary raw materials

Seamless data flow

- Direct data transfer between the feeding gantry and the machine
- Automatic inventory control: monitoring of the minimum stocks and visual display on the operator terminal if there is a shortfall
- Intelligent control system
- Integrated quality control with sorting function

Wide range of applications

- Suitable systems for beam processing and the creation of elements
- Handling of studs, beams and panels in various dimensions
- Vacuum suction unit, also for wood with drying cracks
- Number of places for the raw material stacks can be optionally expanded

STORETEQ H-100

Fully automatic feeding of studs for frame work production

The STORETEQ H-100 provides a fully automatic solution for all the material logistics required for frame work production. The feeding gantry removes the studs from the material storage location and makes them available to the frame work station via an additional collection point. From there, the studs are fed via roller conveyors directly to the frame work station.



The technology:

- Simultaneous transport of several studs (up to four units)
- A wide variety of wood dimensions can be picked up
- Automatic separation: feeding of the wood in the required order

Your benefits:

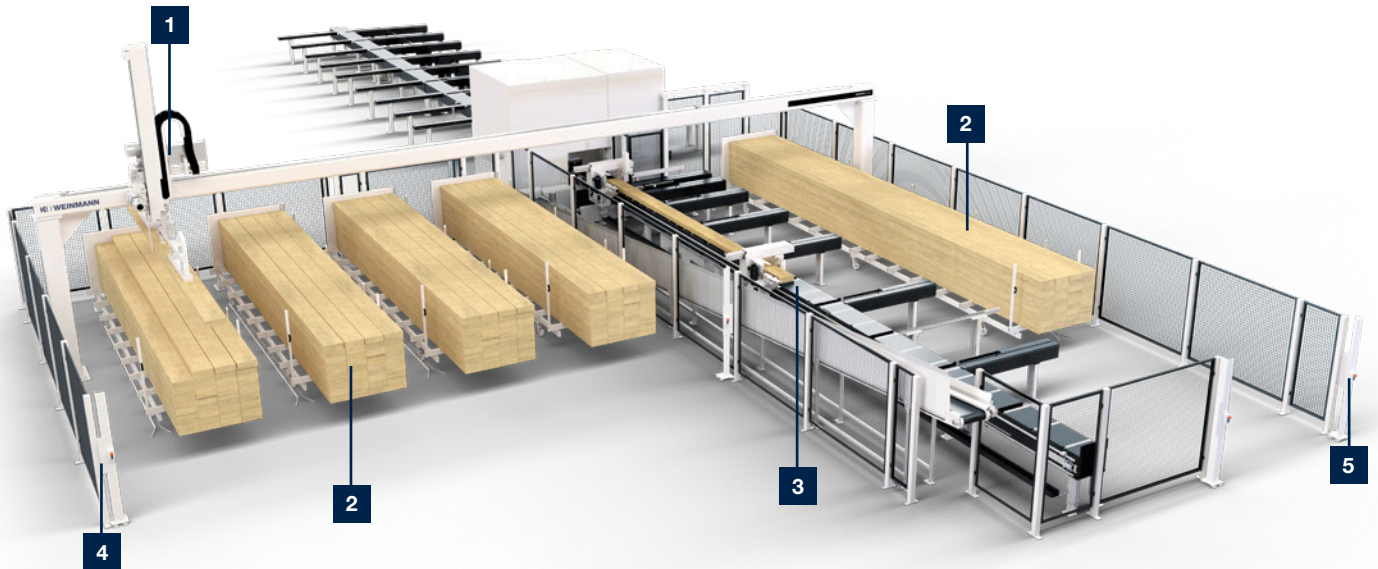
- High level of performance thanks to the automatic material feeding directly at the frame work station
- The appropriate amount of material is available at the machine at the right time

- 1 Linear gantry with vacuum system**
- 2 Multiple storage locations**
- 3 Separator**
- 4 Safety system with light barriers**
- 5 Roller conveyor to the frame work station**

STORETEQ H-300

Fully automatic feeding gantry for beam processing

With the STORETEQ H-300 linear gantry, the unprocessed part feed of the carpentry machine is fully automatic. Using the vacuum grippers, the gantry picks up the beams from a stack of unprocessed parts and places them on the separator of the carpentry machine for processing.



The technology:

- Feeding of unprocessed parts from different stacking positions
- Different dimensions can be picked up: wood lengths of up to 6 m are possible
- Can also be used for unstacking

Your benefits:

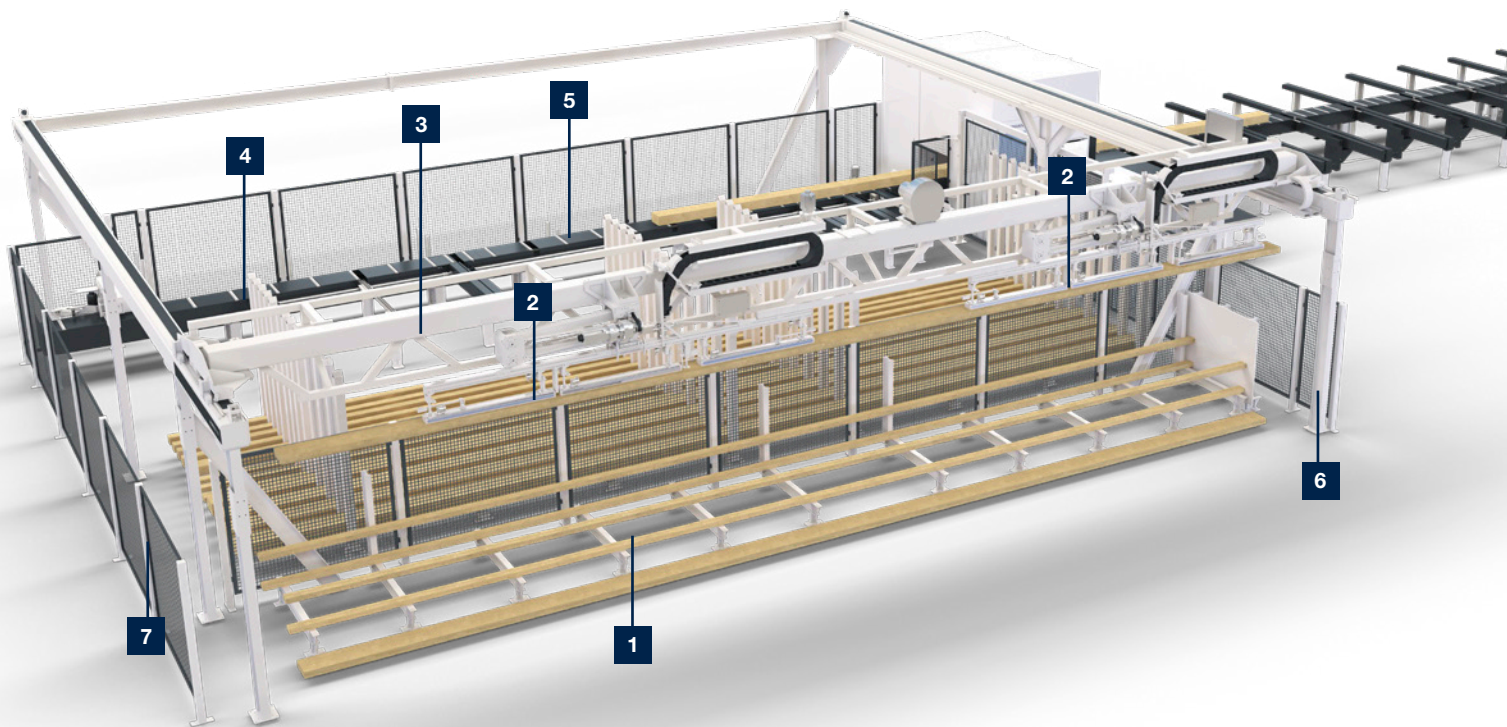
- Can be operated with just one person
- Significantly increased cutting performance compared to manual feeding
- Consistent process thanks to continuous feeding of material and automatic stack formation (optional)

- 1 Linear gantry with vacuum system**
- 2 Multiple storage locations**
- 3 Carpentry machine infeed**
- 4 Safety system with light barriers**
- 5 Separated protected area**

STORETEQ H-700

Individually configurable feeding gantry for beams

The STORETEQ H-700 enables the feeding of the carpentry machine with beams of different lengths. The gantry takes the raw material directly from the material stack and stores it in the upright stores. From here, the required wood is automatically transported to the carpentry machine. The result: an efficient and flexible material and production flow.



The technology:

- Automatic stacking during non-productive times
- Unprocessed part lengths of between 4 and 13.7 m
- Beam weights of up to 350 kg (optionally more)
- Stacking possible
- High number of upright storage spaces (over 30 possible)

Your benefits:

- Optimal utilization of the raw wood
- Simplified logistics by providing all required wood dimensions in one system
- Significantly increased cutting performance compared to manual feeding
- The entire system can be operated with just one person

- 1** Feed position for wood packages for automatic stacking
- 2** Vacuum suction cross rails
- 3** Linear gantry Y and Z travel units
- 4** Upright stores
- 5** Carpentry machine infeed
- 6** Safety system with light barriers
- 7** Separated protected area

STOCKTEQ storage technology

Transport and storage made easy

With this storage technology, elements can be quickly and easily transferred to intermediate storage and picked. The systems also offer the space required for finishing work such as the application of exterior plaster or fitting windows and doors. The systems can be individually adapted to different storage facility sizes and capacities.



Short distances and a high level of safety

- Elements are protected
- Automatic positioning of the setup and distribution trolleys and loading carriage at the transfer stations
- Direct loading

Versatile application options

- Picking
- Finishing elements
- Provision and loading

Ergonomic storage system

- Traveling operator podium and control panel on loading carriage
- Ergonomic working height
- Even heavy elements can be moved easily

STOCKTEQ U-330 | U-530

Setup and distribution trolley

The setup and distribution trolleys are mainly used in production lines for the transport of wall elements between different workstations as well as storage. For this purpose, the elements are placed on trolleys or rollers, transported to the appropriate wall track and then manually pushed out of the setup and distribution trolleys and into the storage location.



Your benefits:

- Horizontal transport of the wall elements
- Longitudinal and transverse traversing operation enables an optimized logistics process even across large distances
- High level of occupational safety thanks to the secure transport of elements and extensive safety equipment
- Easy and safe installation of the elements using the hydraulic swivel device
- Transport of the installed elements via wall trolleys or loose rollers (individually selectable)
- Interlinking with the entire production line and control via PLC
- Controlled either directly on the setup and distribution trolleys or via decentralized control points
- Fully automatic process possible as an option

Wall magazine

STOCKTEQ V-300 | V-500

The STOCKTEQ V-300/V-500 offers the right solution for the intermediate storage of wall elements. In the wall magazine, the elements are temporarily stored and transported upright before loading or during the production process.



Your benefits:

- Production-optimized process: intermediate storage and loading of the elements in the required order
- Additional work, such as plastering or window installation, can be performed in the wall magazine
- Damage-free transport and storage
- Comprehensive safety system with protected wall tracks

Wall magazine

STOCKTEQ V-300 | V-500

The STOCKTEQ V-300/V-500 offers the right solution for the intermediate storage of wall elements. In the wall magazine, the elements are temporarily stored and transported upright before loading or during the production process.



Your benefits:

- Production-optimized process: intermediate storage and loading of the elements in the required order
- Additional work, such as plastering or window installation, can be performed in the wall magazine
- Damage-free transport and storage
- Comprehensive safety system with protected wall tracks

Distribution trolley and loading carriage

STOCKTEQ D-300 | D-500

The STOCKTEQ D-300/D-500 is used for all tasks related to the logistics of the manufactured wall elements. The wall elements are temporarily stored upright according to the loading classification. The operator manually moves the distribution trolley to the desired wall track and pushes the wall into the distribution trolley. For easy handling of the elements, a traveling operator podium is installed on the distribution trolley. From this position, the operator attaches the element directly to the distribution trolley and moves the respective wall element to the desired position in the wall slot.

Your benefits:

- Flexible material transport between individual workstations and storage locations
- Positioning of the trolley at the wall tracks via PLC-controlled laser measuring systems
- High level of occupational safety



Upright stores

STOCKTEQ V-100

The produced elements are transported into the upright stores with the overhead crane and placed between the uprights. Until the final loading, the elements are temporarily stored here. This solution is especially tailored for small and medium-sized businesses.

Your benefits:

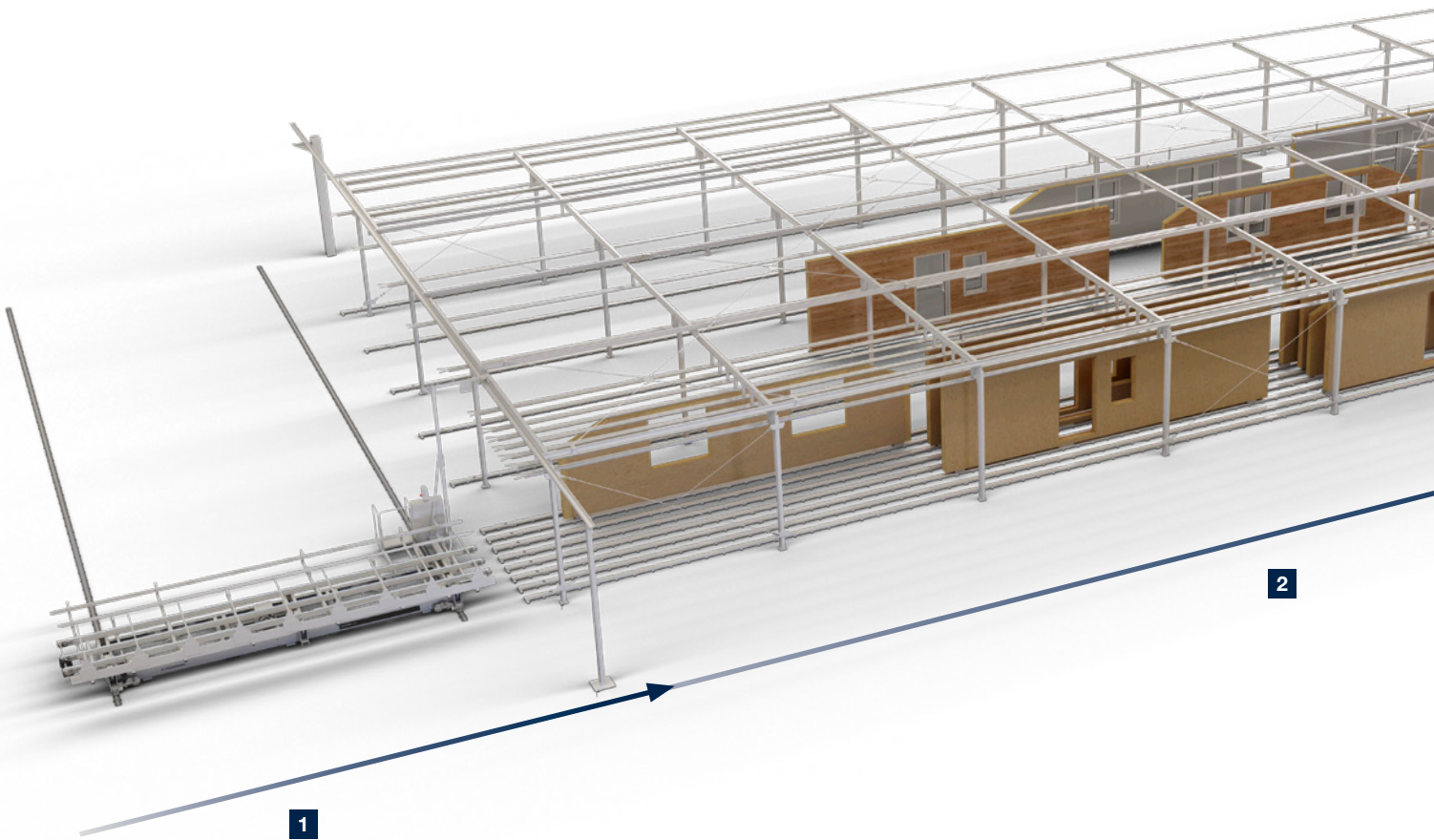
- Storage capacity of up to 100 m wall elements with 6 supports and 80 uprights
- Easy loading and removal using the overhead crane
- Flexible construction with supports embedded in the floor and narrow grid holes
- When not in use, the surface can be used for other work
- Plug-in upright system for easy adaptation to the elements
- The uprights prevent the walls from falling to the side to ensure a high level of occupational safety



Sophisticated logistics

For an optimized process

Our integrated storage system offers you a continuous flow of materials — from the transport of the produced elements through finishing work and on to the intermediate storage and loading of the elements. Manufacture elements in a production-optimized manner and load them in the appropriate assembly order using the storage technology.

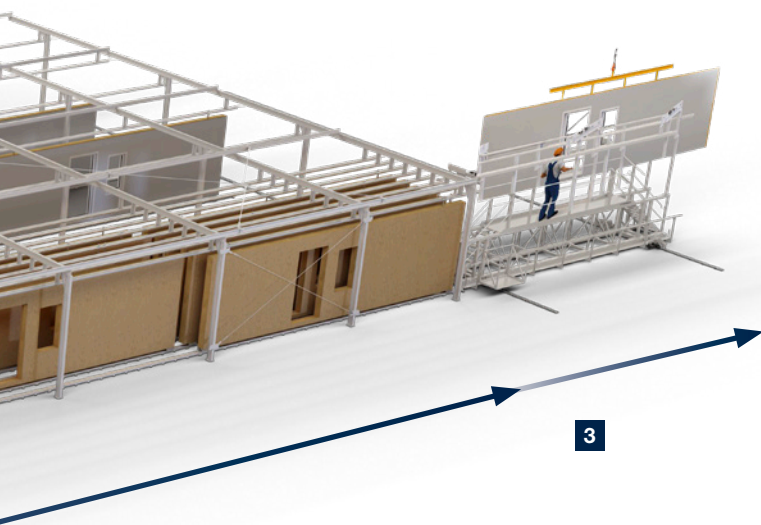


1 Picking
With the distribution trolley, transport elements from the production line directly to the wall slot, to the window installation or to other processing stations.

2 Storage
The finished elements are stored in the wall slot. Finishing work such as fitting the windows, plastering or applying the formwork can also be performed in the wall slot.

3 Loading
For shipping, the respective element is made available from the wall slot and loaded onto the truck with the aid of the loading carriage.

* Illustration shows standing system with trolley.



Two variants are available:

▪ **Standing system**

The wall elements are transported upright on trolleys or rollers.



▪ **Suspended system**

The elements are transported by an overhead conveying system with a guide carriage.

Operation of the setup trolley, distribution trolley and loading carriage

The U-330 | U-530 setup and distribution trolleys and D-300 | D-500 distribution trolleys and loading carriages are equipped with our proven control system from wall and ceiling production. This enables you to work with just one system. All the necessary functions are clearly integrated on the traveling control panel.



Traveling control panel



Control panel with user-friendly functions

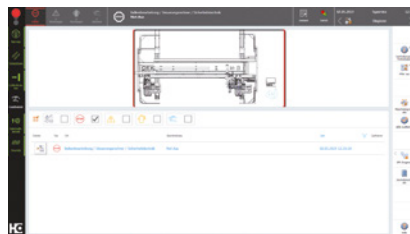
Automatic control (optional)

- All positions for the transport and wall slot systems are stored in the control system and are controlled directly
- The position is detected by a laser distance sensor. No additional installations are required on the hall floor and the driving surface can be used by vehicles without any problems. The storage positions can be changed or extended at any time.
- The safety technology enables the independent operation of the setup and distribution trolleys



powerTouch operation

- Direct and efficient operation, up to 30% faster
- More informative and transparent thanks to additional information and live preview images instead of program icons



woodScout diagnostic system

- Display of warnings and errors for diagnostic purposes
- Systematic troubleshooting for increased machine availability



Options for STOCKTEQ storage systems

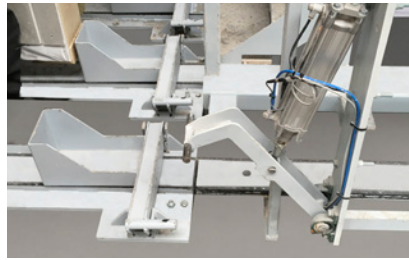
A wide range of options

The various systems can be optimally adapted to meet your requirements. A variety of options are available for this purpose.



Guides for wall elements

The elements are guided into the wall magazine via bolts and rods and secured against falling out. Optionally, the rods can be screwed to the side of the elements or attached to the bolts.



Safety interlock for wall slot

Ensures safety when moving elements from the wall slot into the distribution trolley and prevents the elements from being accidentally pushed out of the magazine.



Upright wall trolley

Manual transport of upright wall elements via wall trolleys guided on rails.



Roller conveyor

Allows the elements to be moved easily without the need for a wall trolley.

Pneumatically opening top guide

Once approved by the operator, this unit can remove the wall elements from the distribution trolley using the overhead crane.

| CONFIGURATION OPTIONS | STOCKTEQ U-330/U-530 | STOCKTEQ V-300 | STOCKTEQ V-500 | STOCKTEQ V-330 | STOCKTEQ V-530 | STOCKTEQ D-300 | STOCKTEQ D-500 |
|------------------------------------|-------------------------|-------------------|-------------------|-------------------|-------------------|-------------------|-------------------|
| Guides for wall elements | ✓ | ✓ | ✓ | ✓ | ✓ | ✓ | ✓ |
| Wall trolley – upright version | ✓ | ✓ | | ✓ | | ✓ | |
| Roller conveyor | ✓ | | ✓ | | ✓ | | |
| Pneumatically opening top guide | | ✓ | ✓ | | | ✓ | ✓ |
| Safety interlock for wall elements | ✓ | ✓ | ✓ | ✓ | ✓ | ✓ | ✓ |

Practical application of the handling and storage systems



Powerful and flexible

Carpentry machine with feeding gantry and integrated storage system

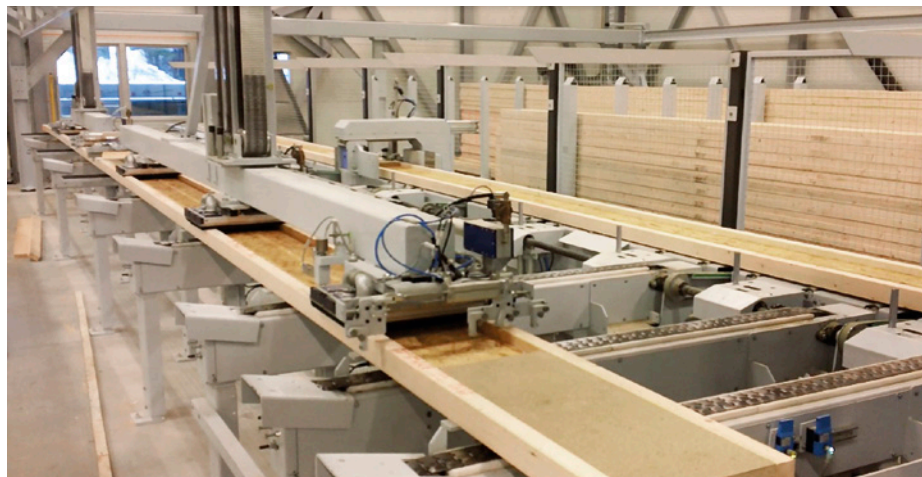
- Integrated storage
- Storage of different wood dimensions
- Special scissor lift system for low hall heights



Material handling and processing in a stack

Material feeding with automatic stack formation for efficient cutting

- Feeding with different materials: solid wood and I-beams
- Various collection and unloading points
- Intelligent control system: the gantry detects each unloading position fully automatically
- Fully automatic destacking function



Versatile beam feeding

Surface gantry for beam feeding with integrated sorting unit

- High flexibility: 11 stacking positions
- Automatic package feeding
- Automatic stacked wood removal
- Integrated quality control





Efficient panel handling

Fully automatic feeding gantry for panel materials

- A wide variety of panel materials and sizes
- Precise positioning of the panels on the element
- Process reliability increases performance and ensures a high level of precision



Stud feed just-in-time

Frame work station with integrated feeding gantry for six stud cross-sections

- High-performance stud feed: simultaneous pick-up of up to four beams
- Increased and consistent overall performance
- Automatic detection of the fill level of the material trolley



Optimized storage — Optimized production

Integrated storage system

- Perform additional work such as plastering or window installation
- Production-optimized process: intermediate storage and loading of the elements in the required order with simultaneous production-optimized manufacturing
- Damage-free transport and storage

Technical data

FEEDTEQ | STORETEQ handling systems

| HANDLING SYSTEMS | FEEDTEQ H-300 | FEEDTEQ H-500 |
|---------------------------|------------------|---------------|
| Machine dimensions | | |
| Lift height (m) | 1.74 | |
| Handling range (m) | 6 x 3.2/12 x 3.2 | |
| Gripping technology | Vacuum pump | |
| Gantry length (m) | 5/6/7 | |
| PRODUCT DIMENSIONS | | |
| Max. panel weight (kg) | 85* | |
| Max. panel size (m) | 1.25 x 3.2* | |

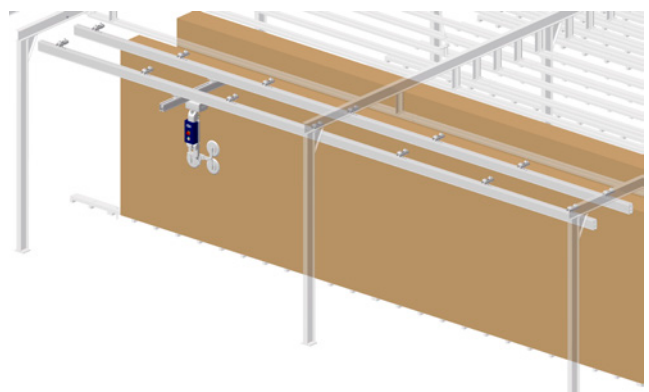
| FEEDING GANTRIES | STORETEQ H-100 | STORETEQ H-300 | STORETEQ H-700 |
|---|---------------------|----------------|---------------------------|
| Machine dimensions | | | |
| Overall height (depending on version) (m) | 4.2 | | 4.3 |
| Number of beam pre-storage compartments | 4–6 | | 10–40 (customer-specific) |
| Gripping technology | Vacuum suction unit | | |
| PRODUCT DIMENSIONS | | | |
| Max. panel weight (kg) | 85* | | |
| Max. beam weight (kg) | 85* | 360* | |
| Max. panel size (m) | 1.25 x 3.2 | | |
| Max. beam length (m) | 3.8 | 6 | 13.7 |

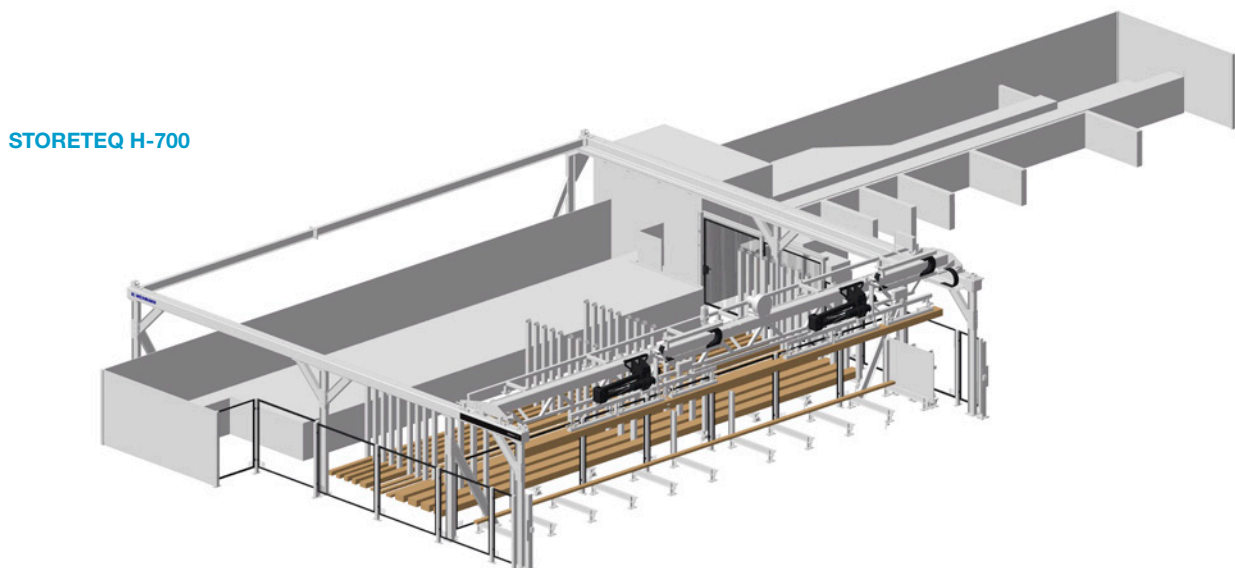
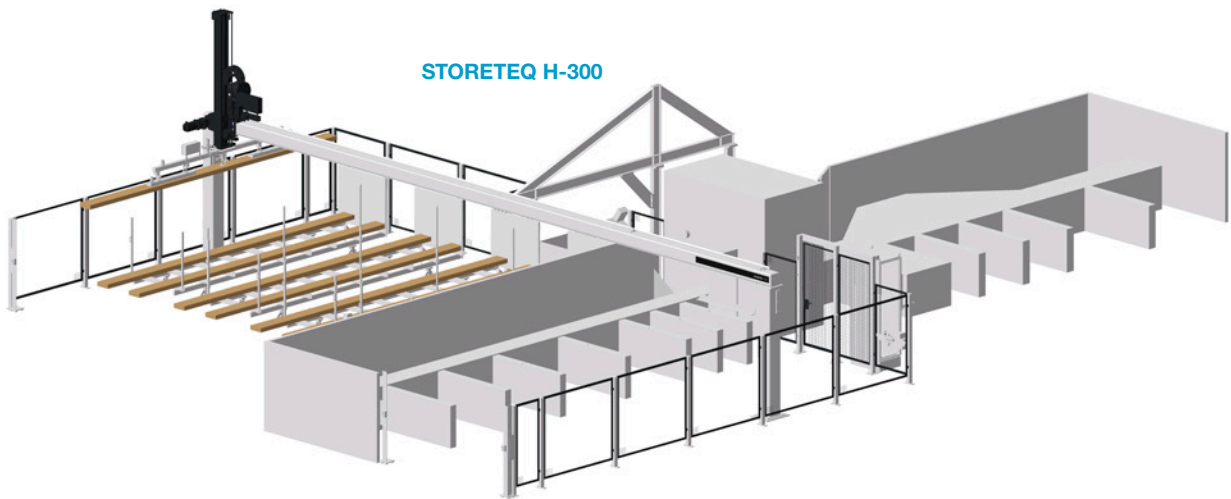
* further configurations possible on request.

FEEDTEQ H-300



FEEDTEQ H-500



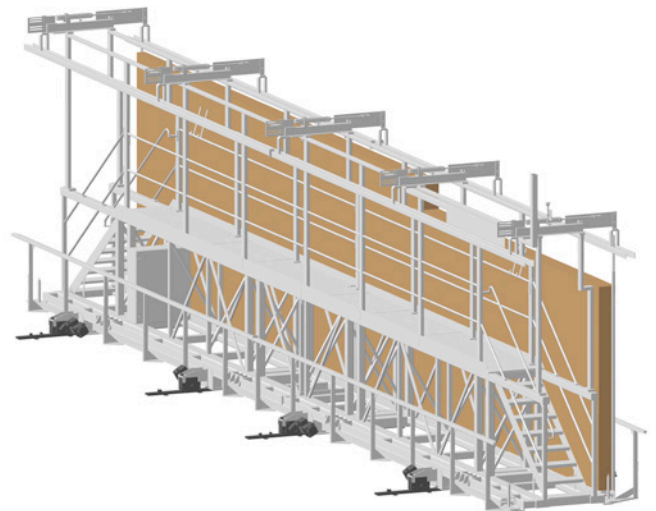
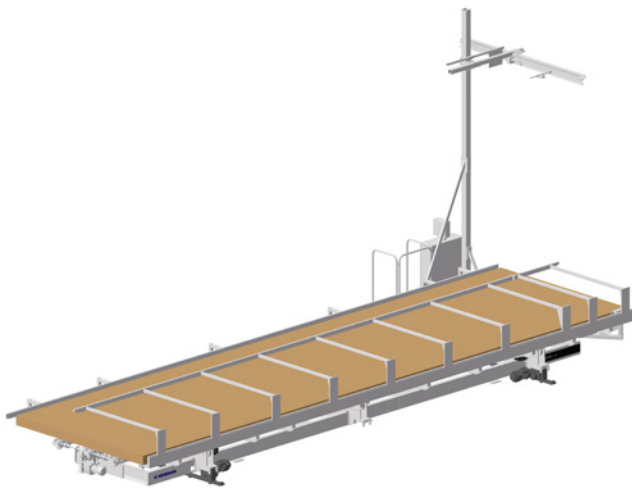


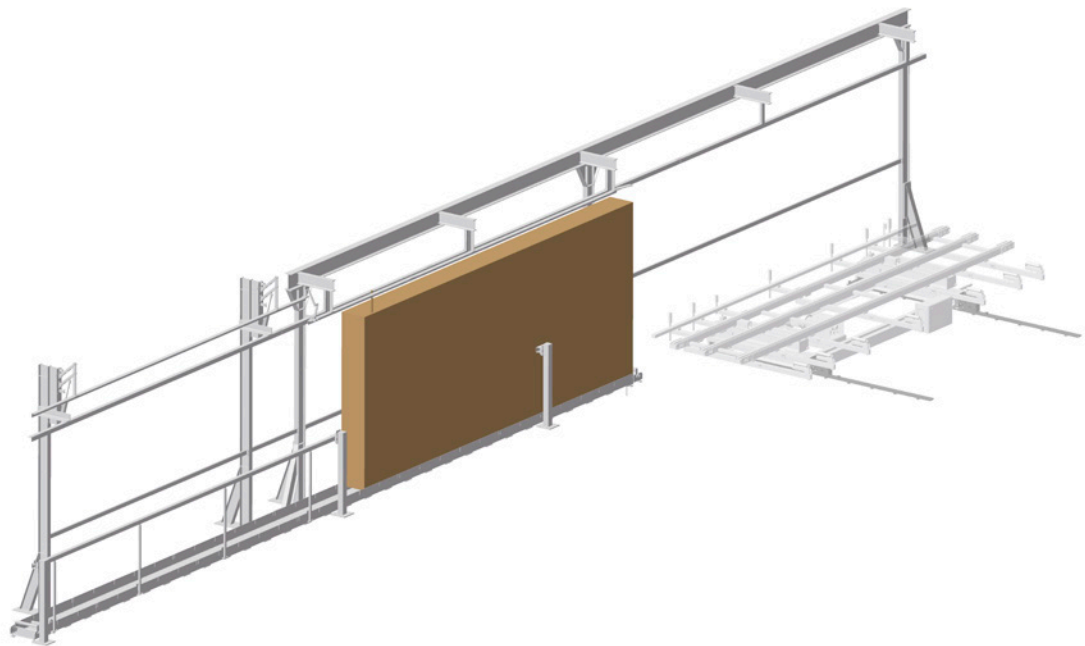
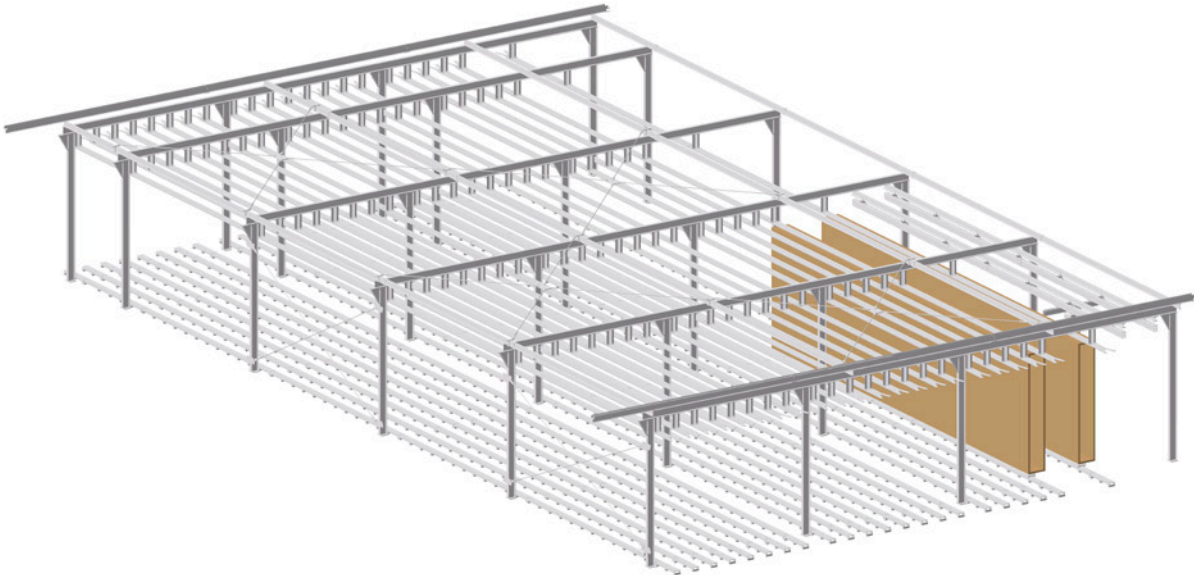
Technical data

STOCKTEQ storage systems

| STORAGE SYSTEMS | STOCKTEQ U-330/530 | STOCKTEQ D-300/500 | STOCKTEQ V-300/500/100/330/530 |
|--|--------------------|--------------------|--|
| Product dimensions | 0.5 | | - |
| Min. length (m) | 6/8/10/12 | | Customer-specific |
| Max. length (m) | 6 x 3.2/12 x 3.2 | | |
| Min. width (mm) | | | 75 |
| Max. width (mm) | | | 500 |
| Min. height (mm) | | | 1200 |
| Max. height (mm) | | | 3200/3810 |
| Special heights (mm) | | | Customer-specific |
| Max. element weight (kg) | 3500* | | |
| Further Information | | | |
| Magazine capacity (m) | - | - | Customer-specific (exception: STOCKTEQ V-100: max. approx. 100) |
| Wall clearance in magazine (mm) | - | - | 500* |

* further configurations possible on request.





VALYOU

Our Mission, Your Performance.

LIFE CYCLE SERVICES

Improved performance, more efficient processes, faster help, assurance of availability and smarter working

TEAM & COVERAGE

Largest global service network in the industry with over 1,350 personnel.

INSTALLATION & COMMISSIONING

For a smooth start, we only let proven experts manage your setup.

OPERATION & CONTROL

After teaching your personnel the intuitive control system, our clever apps help to make the operator's life much easier.

MAINTENANCE & SERVICING

To keep things running, we're happy to take a preventative approach. You decide how often and how intensively you want the support to be. As we all know, prevention is better than the cure.

eSHOP & ONLINE ADVANTAGE

A few clicks and it's fixed. Receive exclusive advantages by ordering spare parts online, depending on market availability. shop.homag.com

HOTLINE & READINESS

When there's an emergency, we're here. Direct by phone, digitally via app or video, or with on-site support. We are close to you with over 90 regional service organizations worldwide. With more than 35,000 spare parts immediately available, we can deliver 85% of your orders fast.

TRAINING & EDUCATION

With classroom, live online or eLearning training, we offer flexible options to help you get knowledge. We conduct over 4,000 customer training courses every year, and we even have our own training centers in 19 countries

MODERNIZATION & IMPROVEMENT

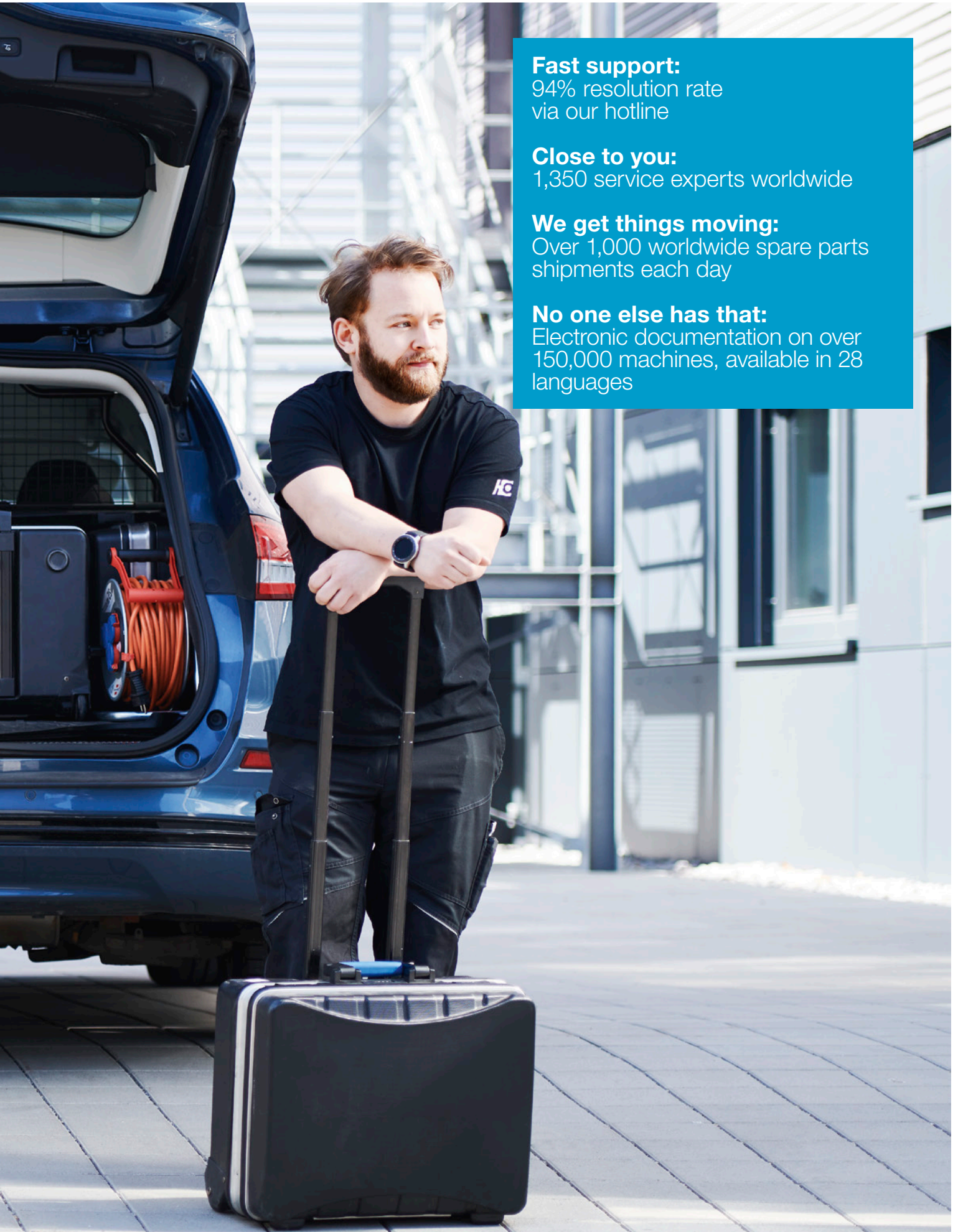
Our modernization program is tailored to your machines and processes. We can evaluate your data and situation and advise you on the next step.

ANALYSIS & SUSTAINABILITY

On request, we analyze all your processes with proven tools and procedures (LeanSixSigma). We have a large, certified team of experts for this purpose.

FINANCING & CONSULTING

We offer you tailor-made financing concepts worldwide. With more than 60 years of experience and a close partner network of prominent banks and insurance companies to help us to find the right solution for you, we're always transparent and reliable in processing.



Fast support:
94% resolution rate
via our hotline

Close to you:
1,350 service experts worldwide

We get things moving:
Over 1,000 worldwide spare parts
shipments each day

No one else has that:
Electronic documentation on over
150,000 machines, available in 28
languages



HOMAG Group AG

info@homag.com
www.homag.com

YOUR SOLUTION